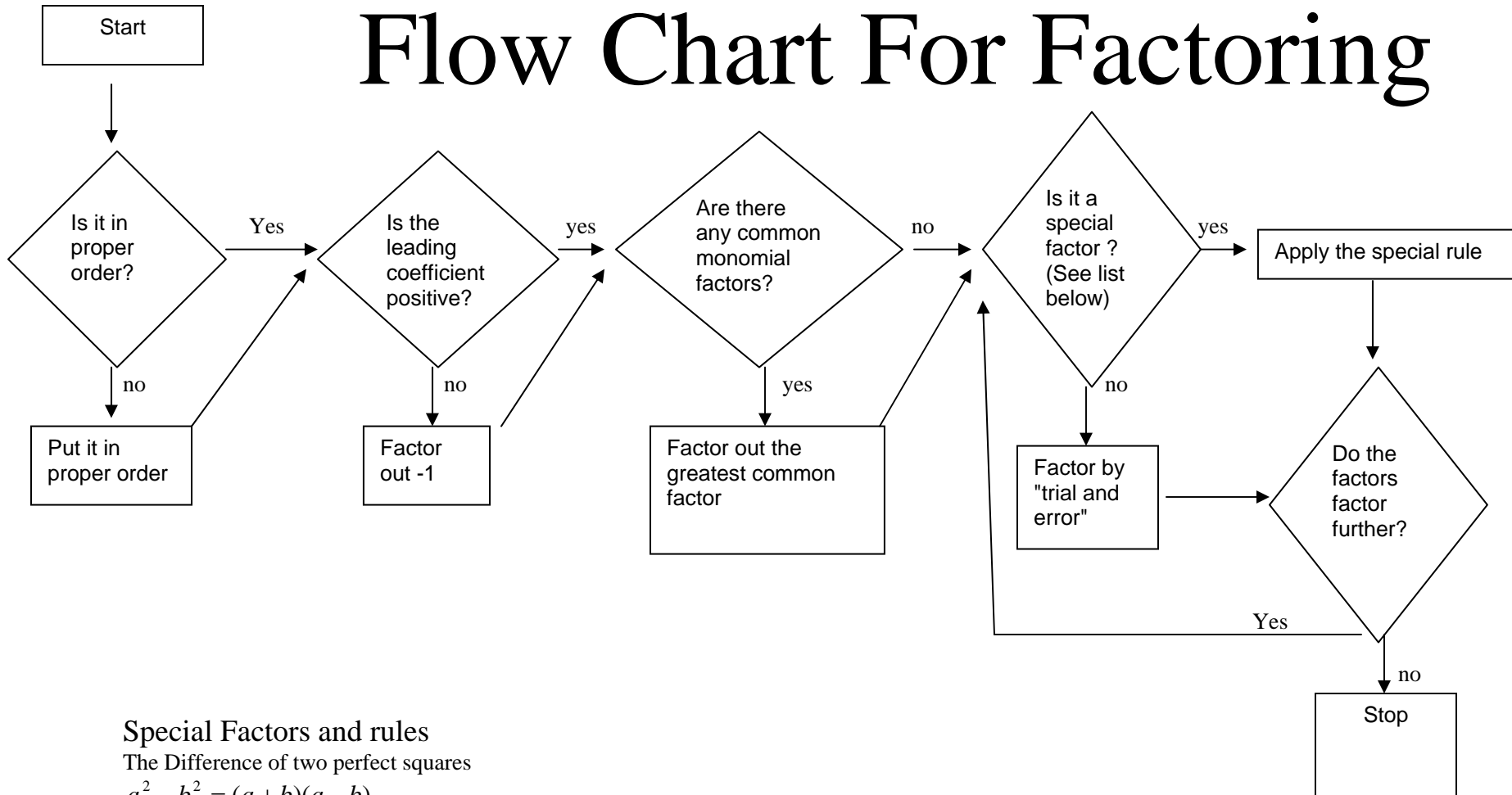


Flow Chart For Factoring



Special Factors and rules

The Difference of two perfect squares

$$a^2 - b^2 = (a + b)(a - b)$$

Perfect square trinomials

$$a^2 \pm 2ab + b^2 = (a \pm b)^2$$

Sum or Difference of two perfect cubes

$$a^3 \pm b^3 = (a \pm b)(a^2 \mp ab + b^2)$$

Factor by grouping

Technique used when you have 4 or more terms

Created by Richard Lewis
Dulles High School
Fort Bend ISD